

The background of the image is a server room with rows of server racks. The racks are illuminated with a blue glow, and there are purple and blue light trails or reflections on the floor. Overlaid on the left side of the image is a network diagram consisting of various sized circles connected by thin lines, representing a data network. The word "loqui" is written in a white, lowercase, sans-serif font across the center of the image.

loqui



ABOUT US

from Latin “to speak”
“converse” “connect”

We are an Internet service provider specialized in corporate clients and Data Centers.

We know the importance of telecommunications and information in both business and life these days, which is why the quality and reliability of our links are measured by the user experience, based on high quality standards of our resources, active monitoring of each of them and highly qualified and trained personnel to attend to eventualities.

All of the above allows us to offer the highest SLA on the market to allow the best user experience.



MISSION

Provide connectivity solutions through a fiber optic network infrastructure that guarantees stability, in addition to Data Center and managed IT services that allow our clients to optimize their operations and make their investments more efficient.

VISION

To become leaders in the Data Center and telecommunications market by delivering quality services, being recognized for our stability and guaranteeing compliance with the highest standards of quality and customer service.

SERVICES BRIEFCASE



CORPORATE INTERNET

Symmetrical internet service with a 1:1 ratio through fiber optics. DDoS protection included. IPv6 available. *IPv4 Public IPs upon request.



DARK FIBERS

Connectivity between point A and point B through an unilluminated fiber optic thread and without active equipment installed at the ends.



DATA TRANSPORTATION

Transport of data through optical fiber in L2 between point A and point B, improving data accessibility by capacity in Mbps.



IT SUPPORT

Our engineering team provides N1, N2 solutions and specialized support in network infrastructure, telecommunications and virtualization.



COLOCATION

Our Tier II® and Tier III® Ready Data Center offer the best connectivity through fiber optics in Guatemala. Uninterruptible electrical power systems. 24/7 active monitoring. Solid security systems.



FIREWALL AS A SERVICE

FaaS (Firewall as a Service) Optimized protection services at the network level; centralized, perimeter and implemented at the software-as-a-service level. Blocks DDoS, TCP SYN, Port Scan and more.

INTERNATIONAL DEPARTURES

We have international departures from Puerto Barrios in Guatemala "25ms" and Panama City in Panama "30ms" to the NAP of the Americas in the United States with dynamic routing through the OSPF protocol.



DATA CENTER (COLOCATION)

Our Tier III® Ready Data Center offers the best connectivity through fiber optics in Guatemala.

- Free data link via **fiber optics**
*Restrictions apply.
- 1 **Cross connection** at no cost to any carrier for the duration of the colocation contract.



Network of
triple redundant
nodes



Consulting with
highly trained
personnel



Redundancy of
submarine cables
(ARCOS-1 and
MAYA-1)

ECOFRIENDLY



Committed to the environment

Being an integral part of the sustainable future of the planet



SOME INFLUENTIAL FACTORS



CLIMATE



REDUNDANCY LEVEL



EFFICIENCY IN AIR CONDITIONING



UPS EFFICIENCY



OCCUPANCY AND CAPACITY

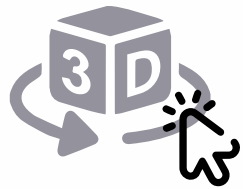
At LOQUI we seek to be **climate neutral** by leveraging appropriate technology and digitalisation, with our ambition by 2030 being to have sustainable **net-zero carbon data centres**, running on 100% renewable energy.

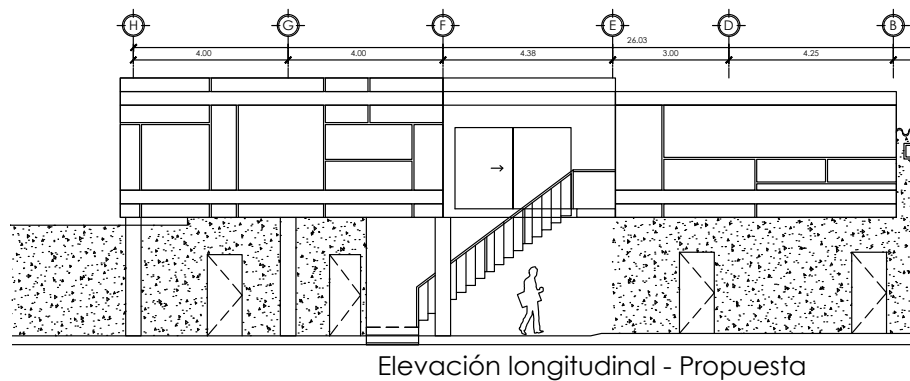
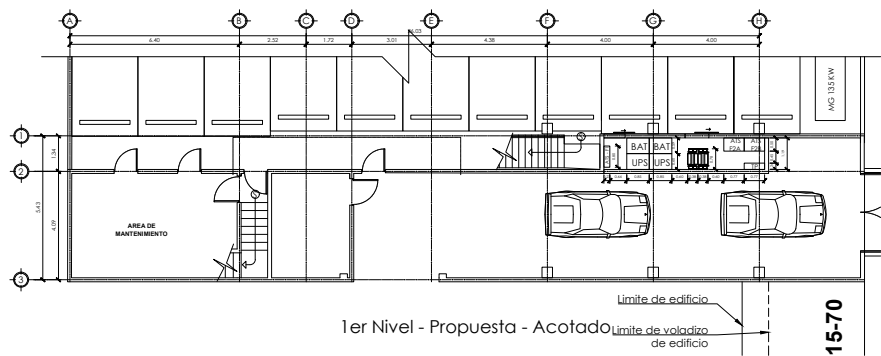
Our ultimate goal is to be **carbon negative**, also known as climate positive, by extracting or capturing more Greenhouse Gases (GHG) from the atmosphere than are emitted. In this objective, the source of energy generation plays an important role, and Guatemala is in a solid position since the percentage of energy generation from renewable sources is greater than 75% according to the 2020 energy matrix.

Various estimates have placed data centers as responsible for 2% of global energy consumption, so at LOQUI we have the goal of achieving a PUE (**Power Usage Effectiveness**) of **1.30**, with the current PUE of our operation being 1.45.

loqui

OUR INFRASTRUCTURE





**PHASE 1
COMPLETE
100% OPERATIONAL**

DATA CENTER TIER II® READY



INGRESO

- Al momento de ser aprobado el ingreso se asignará un Monico quien será el responsable de realizar el acompañamiento o la visita guiada.
- Toda persona que ingrese al Centro de Datos (Data Center) deberá registrarse.

PROHIBICIONES DE INGRESO

- El ingreso de líquidos o alimentos, productos inflamables, equipo electromagnético, cámaras, discos portátiles, dispositivos móviles o cualquier aparato electrónico similar.

PROHIBICIONES DENTRO DEL DATA CENTER

- Resar: equipo o accesorios sin autorización expresa por escrito del Gerente de Ingeniería y/o Coordinador de Centros de Datos (Data Center).
- Bloquear puertas de acceso, bloquear o dañar cámaras de seguridad, sensores de humo, temperatura y/o humedad.
- Acceder, manipular, alterar o destruir equipos o información requeridos en ellos, los cuales no sean de su propiedad dentro del Centro de Datos (Data Center).
- Hacer uso de circuitos destinados a la alimentación de racks (PDU) si para conectar otros equipos con dispositivos de diagnóstico móviles, aspiradores, ventiladores, entre otros.
- Instalar, modificar, desconectar equipos o herramientas que puedan afectar el funcionamiento del Centro de Datos (Data Center).
- Almacenar dentro del Centro de Datos (Data Center) Cables, documentos y equipo no autorizado.





We have electrical backup in each cabinet with UPS from 3Kva, precision air conditioning, data link redundancy, strict access controls, fire detection and suppression system, technical support, 24/7/365 customer service, private parking .

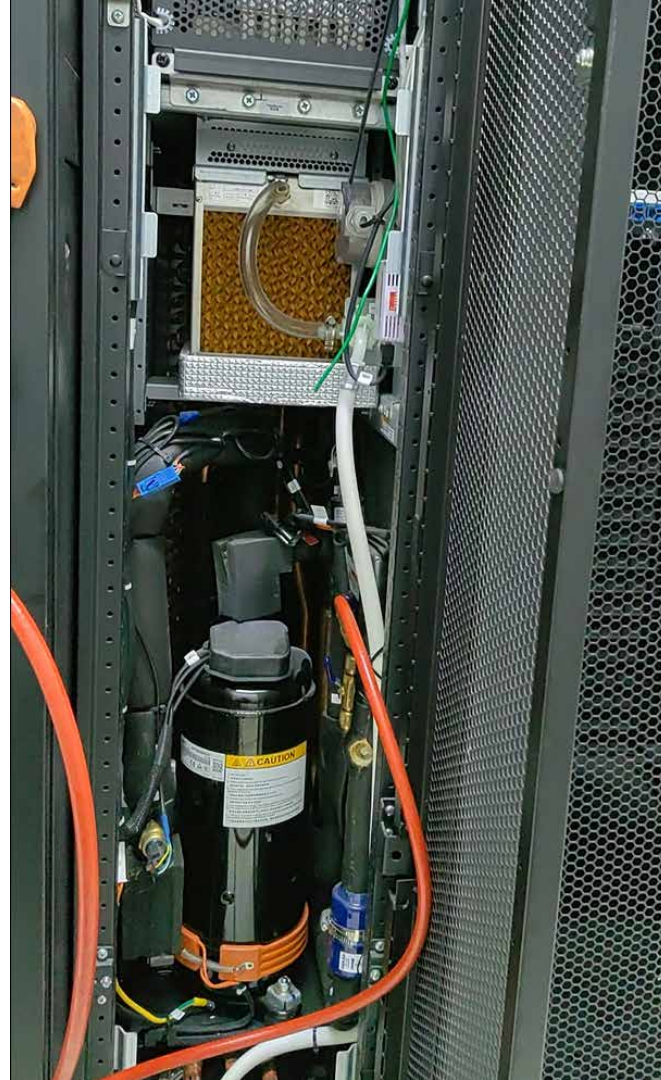
**PHASE 1
COMPLETE
100% OPERATIONAL**

DATA CENTER TIER III® READY





Huawei FusionModule2000 is a next-generation modular data center that integrates cabinets, power, cooling, cabling, management and other subsystems. With deployment in two rows and isolation of cold air aisles. Thanks to artificial intelligence (AI) – Huawei's iPower, iCooling and iManager systems – the reliability, availability and efficiency of the Data Center are significantly improved.



DATA CENTER PHASE II



Telecomunicaciones N+2
Más de 3 líneas diferentes de comunicación con nuestra red de nodos.



Energía eléctrica ininterrumpida
Redundancia con mantenimiento concurrente de energía eléctrica N+2. 72 h de autonomía y 285 kW de potencia.



Cooling N+2
Sistema de triple aire acondicionado *in-row*. (con aislamiento de pasillos)

Huawei FusionModule 2000

Simple - Green - Smart - Reliable



Estrictos controles de **acceso**. Incluyendo **Facing Recognition**.



Acompañamiento **técnico**
Atención al cliente **24/7/365**



Parqueo privado
Personal altamente capacitado



Sistema de detección **VESDA** y supresión de **incendios**



UPS de sistema trifásico, **208 kVA**.



Sistemas

- iPower
- iCooling
- iManager

R24 Doble Pasillo con baterías de Litio In-row



Sistema de Monitoreo. Monitoring End to End **DCIM** (Digital Visualization) en tiempo real.



MOTORGENERATORS

Uninterrupted electrical supply through the commercial electrical connection and electrical redundancy with a 60Kw generating plant and storage tank for an autonomy of up to 72 hours, depending on the active load.

For Phase II we have uninterrupted electrical power and redundancy with concurrent maintenance of N+2 electrical power.

2 motor generators with 72 hours of autonomy and 285Kw of power.





CONTACT US

and learn more about our solutions



www.loqui.com.gt



PBX. 2236-1500



info@loqui.com.gt



[@loqui_gt](https://www.instagram.com/loqui_gt)



Loqui Guatemala



CONNECTED WITH
THE FUTURE